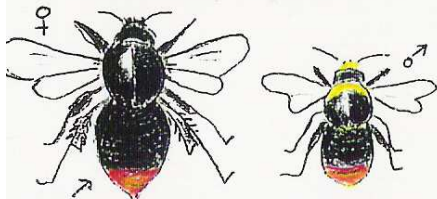


**Scottish Bumblebee Survey**  
(chart produced by BRISC based on the authority of Edward Step and Oliver Pryor-Jones & Sarah Corbet)

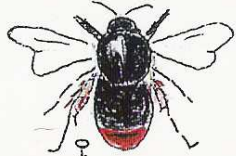
Note Bumblebees have many mimics. Bees have two pairs of wings (hooked together in flight) - flies have one pair. In bees the antennae are long and segmented (12-13), in mimic flies the antennae are short (3 segments) and visible only close up.

**Red or orange-tailed bumblebees**



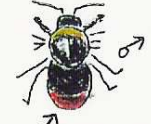
**Red-tailed bumblebee**  
*Bombus lapidarius*

♂ yellow collar on thorax. ♂♂ have no pollen basket. Wk similar to queen



**Red-shanked carder bee**  
*B. ruderarius* (rare)

Very like Red-tailed but pollen baskets have red hairs.



♂ yellowish collar. wk similar to queen



**Early bumblebee** *B. pratorum*

Small, with pale orange/pinkish tail all may lack 2<sup>nd</sup> band Rarely with second yellow band on thorax



wk & ♂ tiny

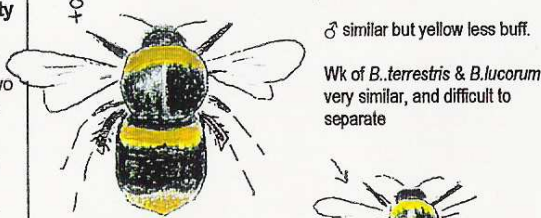


**Bilberry bumblebee**  
*B. monticola*

note abdomen almost entirely orange/red

wk & ♂ similar to queen

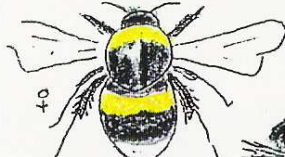
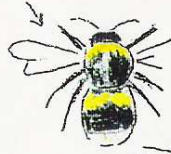
**Yellow and black striped bumblebees**



**Buff-tailed bumblebee**  
*Bombus terrestris*

Queen very large w. square buff tail. 2 brownish yellow bands

♂ similar but yellow less buff. Wk of *B. terrestris* & *B. lucorum* very similar, and difficult to separate

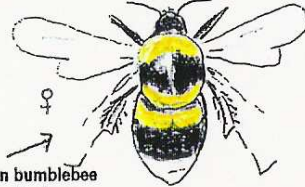


**White-tailed bumblebee**  
*Bombus lucorum*

2 bright yellow bands, white tail (In *B. magnus*, the first yellow band hooks round the forewings.

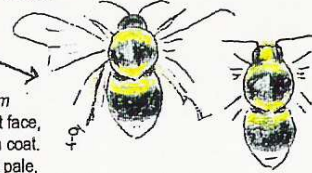


♂ pale/creamy yellow, with long uneven coat, and yellow hair on face.



**Garden bumblebee**  
*Bombus hortorum*

Very long head and tongue. 3 bright yellow bands, one at front and one at rear of thorax, and one at top of abdomen. Hairs on pollen basket black. Wk & ♂ similar.

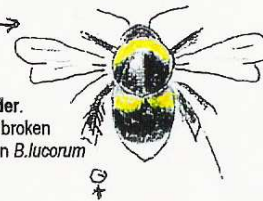


**Heath bumblebee**  
*B. jonellus* (local)

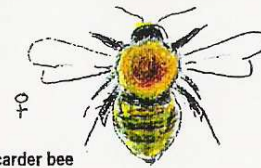
3 bands like *B. hortorum* but straw-yellow. Short face, shorter and more even coat. Hairs on pollen basket pale. Wk similar to queen, ♂ similar but has yellow head

**Broken belted bumblebee**  
*B. soroensis* (local)

Similar to *B. lucorum* but thorax & abdomen much rounder. Yellow band on abdomen often broken (this feature can also be found in *B. lucorum* Wks like queen, ♂ often has a brownish or reddish tail.



**Foxy bumblebees**



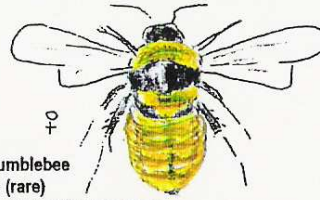
**Common carder bee**  
*Bombus pascuorum*

Foxy thorax and abdomen - colours may vary from deep orange to silver. May or may not have black hairs on abdomen wk and ♂ similar but smaller.



**Scarce carder bee**  
*B. muscorum* (rare)

Very similar to species above, but usually larger. Abdomen has a silvery sheen. Wk & ♂ similar. difficult to tell in the field



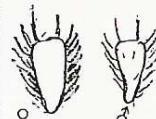
**Great yellow bumblebee**  
*B. distinguendus* (rare)

Long, thick coat. Pale yellow abdomen and a black band across thorax. Note - worn specimens of the two species about may show black patch on thorax wk & ♂ smaller but similar.

**Pollen baskets**

(use a magnifying glass to see!)  
Only queens and workers of true bumblebees (*Bombus*) have pollen baskets

Pollen baskets are situated on the upper section (tibia) of last pair of legs. They are flat, shiny, hairless, and fringed with long stiff hairs. In males, the tibia is also flat and shiny but have some hairs

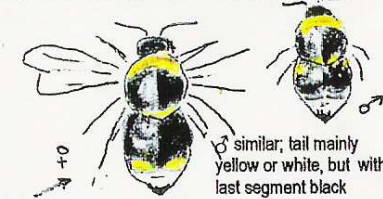


The tibia on Cuckoo bumblebees (*Psithyrus*) is convex, dull and hairy - Cuckoo bees never collect pollen



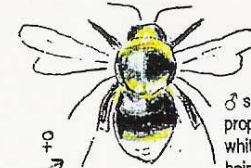
**Cuckoo bumblebees**

Cuckoo bees are less hairy than true bumblebees and usually less active. ♀♀ never carry pollen and have no pollen baskets. ♂♂ are even more lethargic. There are no workers.



**Gypsy cuckoo bee**  
*Psithyrus bohemicus*

Takes over nests of *B. lucorum* Long shaggy coat. ♀ has white tail bordered by a broken yellow band. Yellow of thorax and abdomen pale and rapidly fading. No coloured band at top of abdomen, but some pale hairs on end of thorax. Prominent ridges (callosities) on underside of tip of tail.



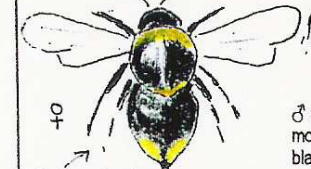
**Barbut's cuckoo bee**  
*P. barbatus*

Takes over nests of *B. hortorum* ♀ has round thorax and abdomen, mainly black, long yellow hairs on top of head and dingy yellow bands at front and (thinner one) at back of thorax. Tail white.



**Four-coloured cuckoo bee**  
*P. sylvestris*

Takes over nests of *B. pratorum* and *B. jonellus* ♀ white to yellowish tail, callosities inconspicuous, tip of abdomen very curved under.



**Field cuckoo bee**  
*P. campestris*

Takes over nests of *B. pascuorum* ♀ has two bands of yellow on thorax, a thick collar and a thinner one at the rear. Abdomen black with a yellow tail. Coat very thin. Dark specimens may lack yellow on thorax. AM